

Paske Hut via Turk Ridge, Rainbow Conservation Area, Marlborough

Directly south of Paske Hut stands Turk Ridge, a high rugged dividing range between the Paske and upper Wairau, which has several crossing points at high cols to the Wairau, the best being just east of spot height 2009m. This drops to an unnamed feeder of the Wairau. The route is reasonably rough and care is required with finding the right way down – it is steep bluff country. High, gaunt mountains are all around and some will carry snow well into summer.

Start the route at Lake Tennyson Campsite and head up the eastern side of the lake to cross the Crimea Range into the Wairau at the pass between Mt Maling and Crystal Peak.

Access Lake Tennyson Campsite, St James Conservation Area

Grade Moderate-difficult

Time 5-7hr

Distance 13.7km

Total ascent 1467m

Accommodation Paske Hut, 6 bunks/\$5

Map BS24, BT24

Elevation Profile



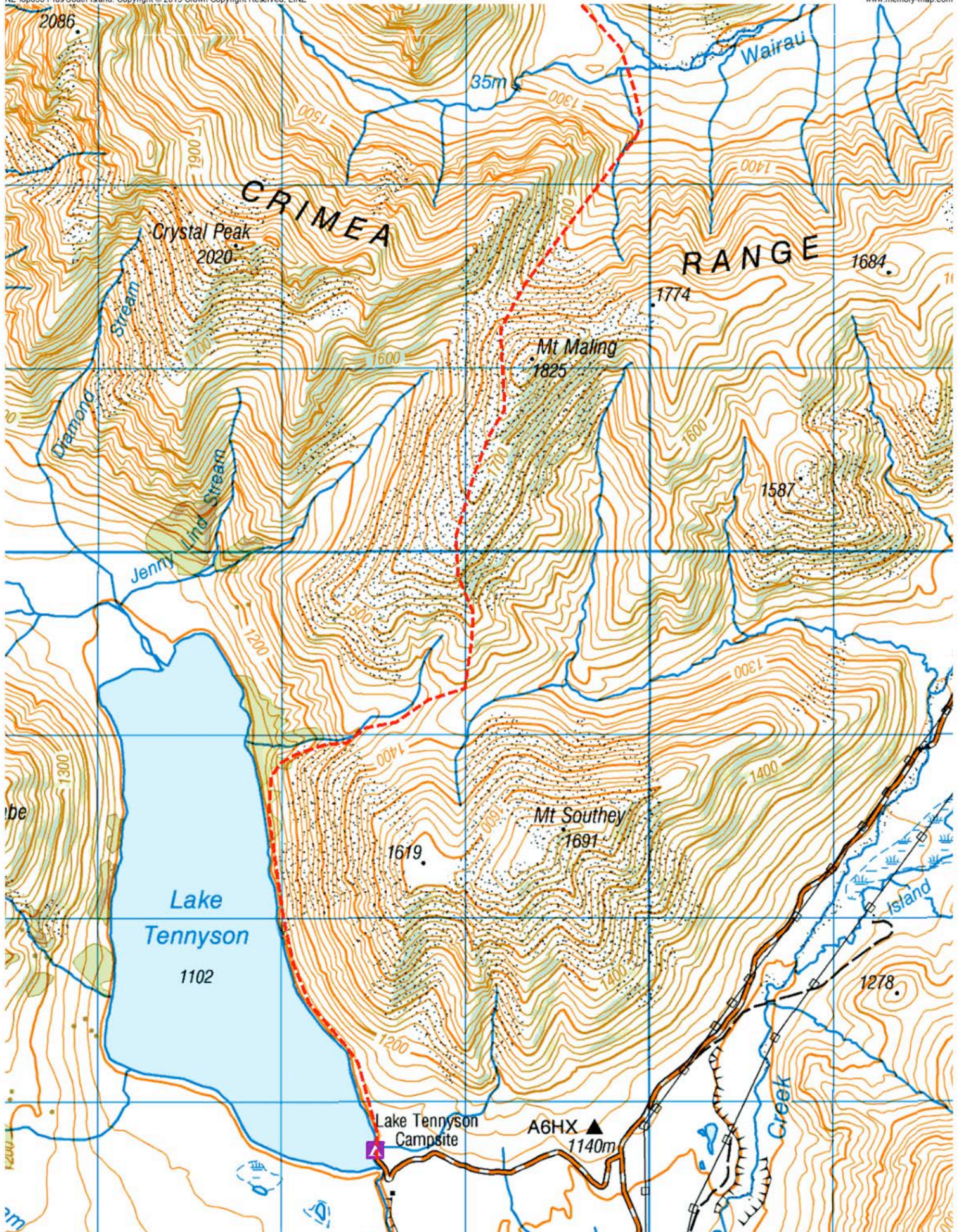
© Wilderness Magazine, www.wildernessmag.co.nz

Disclaimer: While every effort has been made to map this route correctly, *Wilderness* does not accept responsibility for any errors. Users should plan their routes and gather as much information as possible before departing. The GPX file associated with this route has been drawn using Memory-Map software, version 6. Use discretion when following the route, especially when no track is marked on the map. The GPX file in these cases are a 'best guess' of the route only. Users should use a combination of GPS, visual observations, maps and compass to find the best possible route. Memory Map shows purple tracks and hut icons as verified routes and huts. Red or blue routes are those drawn by Wilderness.

Paske Hut via Turk Ridge, Rainbow Conservation Area, Marlborough. Map1

NZ Topo50 Plus South Island. Copyright © 2015 Crown Copyright Reserved. LINZ

www.memory-map.com



Paske Hut via Turk Ridge, Rainbow Conservation Area, Marlborough . Map2

NZ Topo50 Plus South Island. Copyright © 2015 Crown Copyright Reserved. LINZ

www.memory-map.com

