

## Paske Hut via Island Gully Hut, Rainbow Conservation Area, Marlborough

Another option from off the Wairau-Hanmer Springs Hydro Road is to park at Island Gully Hut and tramp up the Wairau River and cross over Turk Ridge at the same point mentioned above under the Turk Ridge section, or at another crossing point closer to Island Gully Hut. These crossings will need to be chosen with care as there is some very steep, bluffed country on the Paske side of the range.

**Access** From Island Gully Hut, On Island Gully Road

**Grade** Moderate-difficult

**Time** 4-6hr

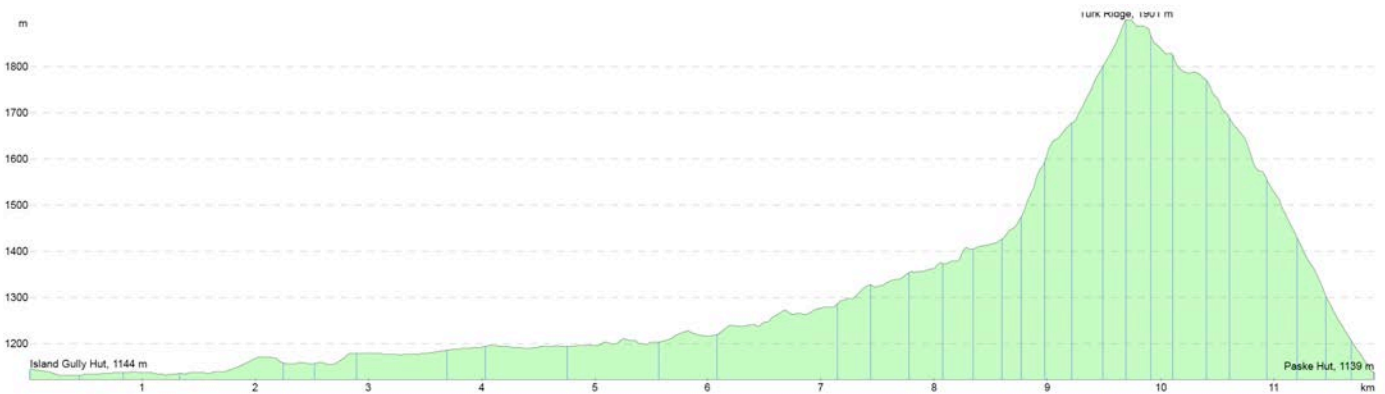
**Distance** 11.9km

**Total ascent** 865m

**Accommodation** Paske Hut, 6 bunks/\$5

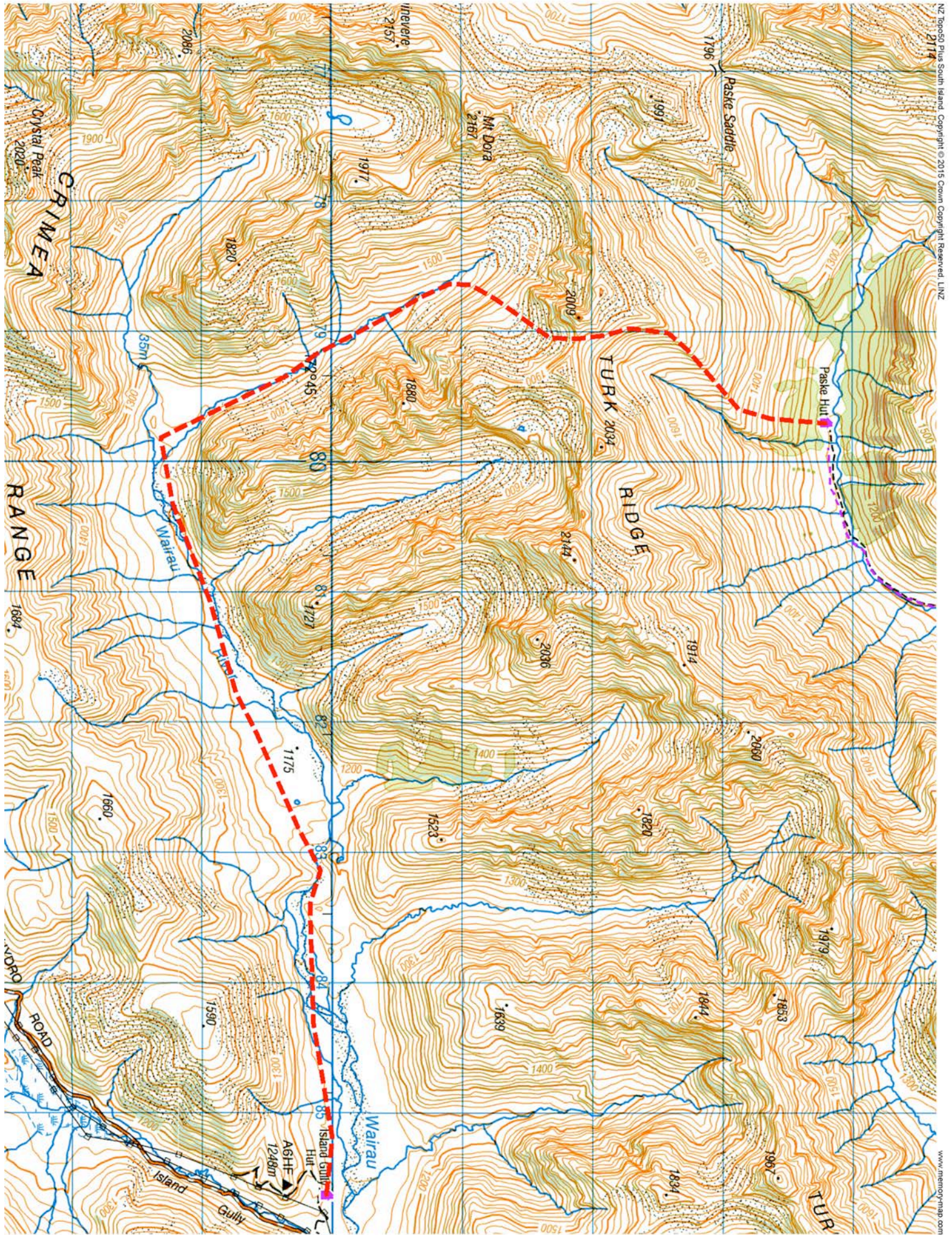
**Map** BT24, BS24

## Elevation Profile





Paske Hut via Island Gully Hut, Rainbow Conservation Area, Marlborough. Map1



NZ Topo50 Plus South Island Copyright © 2015 Crown Copyright Reserved LINZ

www.memory-map.com



