

## Travers Peak, Hanmer Conservation Park

### Wild file

**Access:** Signposted opposite the Deer Valley car park on SH7 just south of the Lewis Pass Rd summit

**Distance:** 3.63km

**Time:** 2-4hr

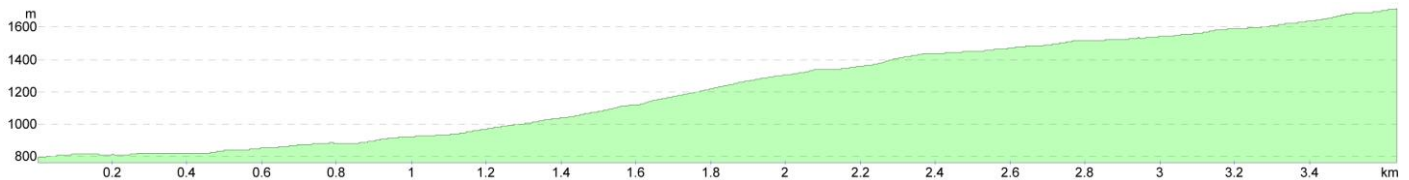
**Grade:** Moderate

**Topo50 Map:** BT23

### Description

A well-marked trail climbs onto the terrace above the road and slowly turns to the east to gain the spur between Goings and Foleys creeks and then ascends to the bush edge on Travers Peak (1724m).

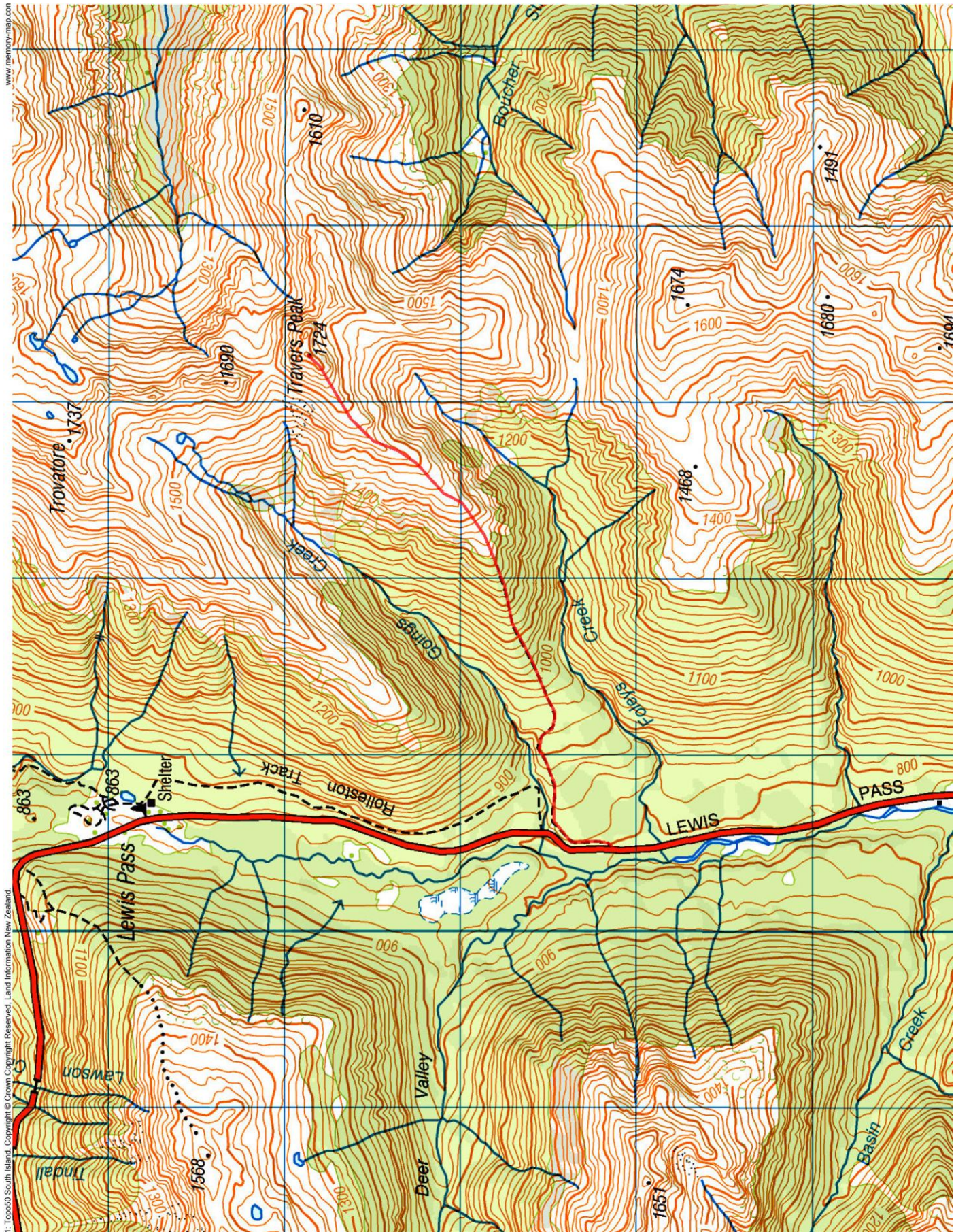
### Elevation Profile



© Wilderness Magazine, [www.wildernessmag.co.nz](http://www.wildernessmag.co.nz)

Disclaimer: While every effort has been made to map this route correctly, Wilderness Magazine does not take responsibility for any errors in the route. Users should use discretion when planning their routes and gather as much information as possible before departing.





1: Topo50 South Island. Copyright © Crown Copyright Reserved. Land Information New Zealand.