

Shallow Bay Hut, Fiordland National Park

Wild file

Access From Rainbow Reach Rd, off SH95 6km south of Te Anau

Distance 4.81km

Time 1-2hr

Grade Easy

Accommodation: Shallow Bay Hut (standard, six bunks)

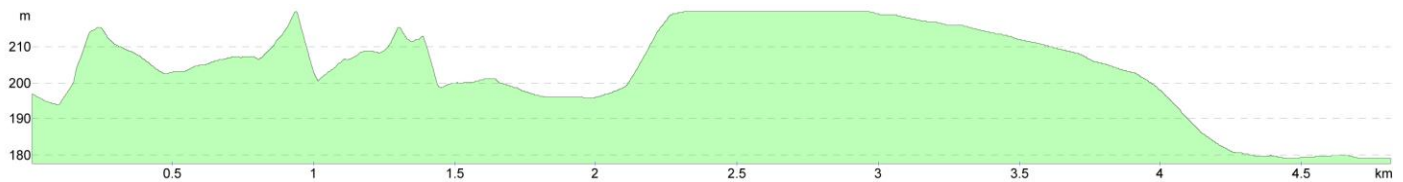
Topo50 Map: CD07

Description

This is a great family trip – the track is easy and the distance short.

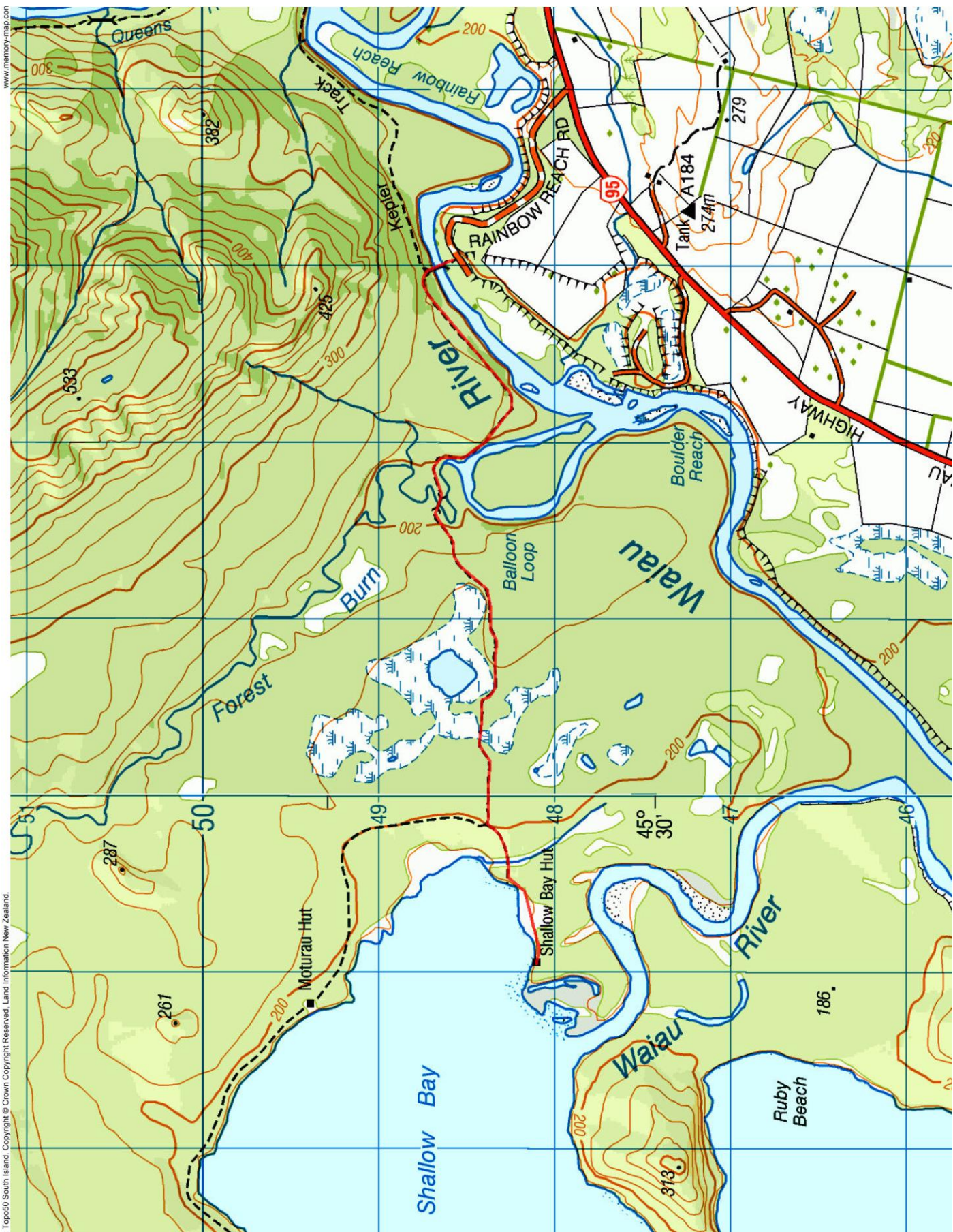
Cross the suspension bridge over the Waiau River into Fiordland National Park to meet up with the wide, flat Kepler Track Great Walk. The track follows the Waiau for a bit and then cuts inland near a sphagnum moss swamp, accessible across a boardwalk. The hut is on a side track to the Kepler right on the shore of Lake Manapouri.

Elevation Profile



© Wilderness Magazine, www.wildernessmag.co.nz

Disclaimer: While every effort has been made to map this route correctly, Wilderness Magazine does not take responsibility for any errors in the route. Users should use discretion when planning their routes and gather as much information as possible before departing.



1: Topo50 South Island. Copyright © Crown Copyright Reserved. Land Information New Zealand.

www.memory-map.com