

Rocky Mountain Track, Diamond Lake Conservation Area

Wild file

Access 16km from Wanaka on the Mt Aspiring Road

Grade Easy

Time 3hr

Distance 4km

Map CA12

Description

From the car park, head past the willow- and raupo-fringed Diamond Lake. Winters were so severe in the 1950s that the lake was often used for ice skating.

The track to the lake lookout leads steeply uphill on wooden steps and under rocky schist cliffs but there's opportunity to rest at the lookout.

Onward and upward again the track soon splits. Take the eastern track then wander along a side track to the Lake Wanaka lookout. There are fantastic views here across the lake and its islands Mou Waho and Mou Tapu to The Peninsula and the peaks beyond.

Rejoin the main track and the track zigzags steeply in places, then rounds numerous bluffs until finally reaching the summit.

Head down the western loop, where there are steep cliffs beside the track, which hairpins down then ducks through some bush-filled gullies. At times the track is a scramble around rocky cliffs and is very dangerous in winter in these sections.

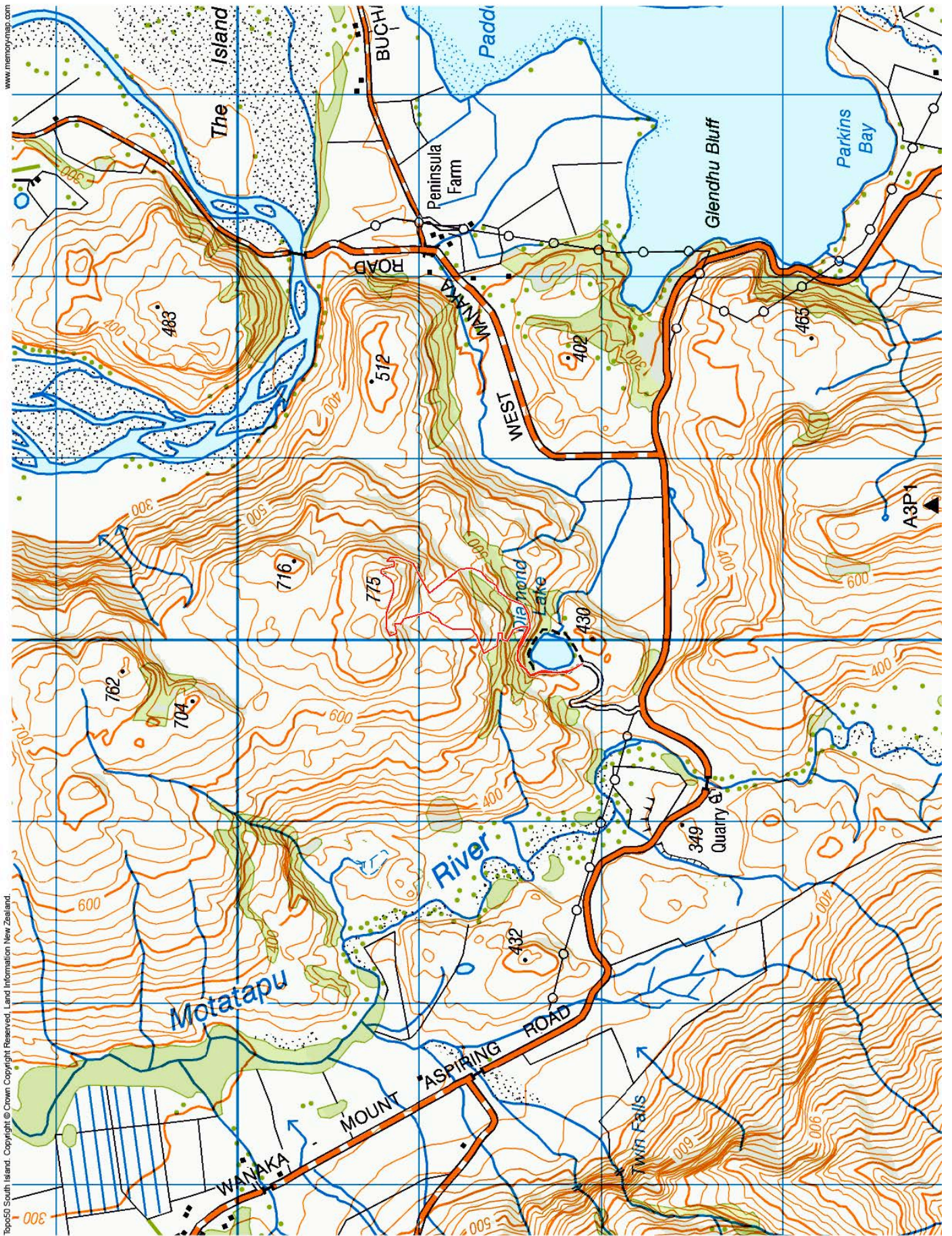
The final part of the walk retraces the outgoing part, past the Lake Diamond viewpoint and down to the lake then back to the car park.

Elevation Profile



© Wilderness Magazine, www.wildernessmag.co.nz

Disclaimer: While every effort has been made to map this route correctly, Wilderness Magazine does not take responsibility for any errors in the route. Users should use discretion when planning their routes and gather as much information as possible before departing.



Topo50 South Island. Copyright © Crown Copyright Reserved. Land Information New Zealand.

www.memorymap.com