

Lewis Pass Tops, Lewis Pass National Reserve

WILD FILE

Access Opposite the St James Walkway car park at Lewis Pass

Grade Easy-moderate

Time 2-3hr to the tarns

Distance 3.35km to tarns

Map BT23

Description

The Lewis Pass area offers a variety of excellent family trips but you can't go past the easily accessible Lewis Pass tops for an introductory above the bush-line experience. A good track, easy tussock tops, a multitude of tarns to camp by and peaks to scramble up provide something for all families no matter how old the kids are.

It's only a 400m climb to bush-line where a poled route leads to the first high point along the ridge. Here it is gloriously easy walking along a flattish ridge dotted with tarns. For families with young kids, or for those who are new to tramping, these tarns are an excellent overnight destination as campsites and natural playgrounds are abundant amongst the tarns and tussock. There are lots of choices for families with older children too. If the weather is good and the parents experienced, an unmarked route leads along the ridge to Brass Monkey Biv and down to the Lake Christabel and Rough Creek tracks.

Elevation Profile

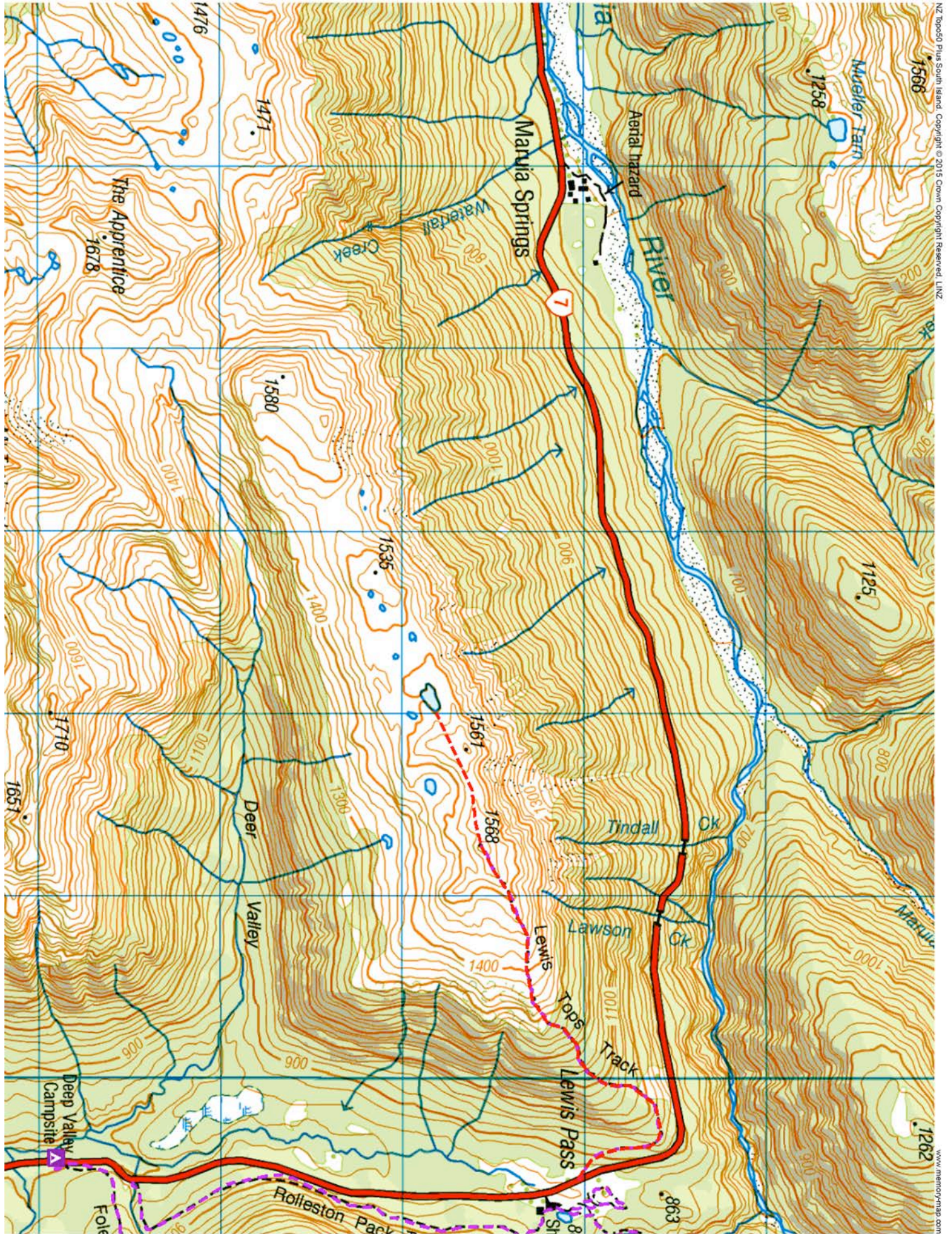


© Wilderness Magazine, www.wildernessmag.co.nz

Disclaimer: While every effort has been made to map this route correctly, Wilderness Magazine does not take responsibility for any errors in the route. Users should use discretion when planning their routes and gather as much information as possible before departing.

Maps are created with Memory-Map software, version 6. This software shows purple tracks and hut icons as verified routes and huts – meaning they are where they say they are and should be passable. If a purple track is shown on the maps in this document, it is the route from the Memory-Map software. If a red or blue route is shown, it has been drawn by Wilderness.

Lewis Pass Tops, Lewis Pass National Reserve



NZ Topo50 Plus South Island Copyright © 2015 Crown Copyright Reserved LINZ
www.memory-map.com