

Lake Surprise via Mangaturuturu Hut, Tongariro National Park

Wild file

Access: Off a small lay-by on the Ohakune Mountain Rd

Distance: 4.3km

Time: 2hr

Grade: Easy

Accommodation: Mangaturuturu Hut (serviced, 10 bunks)

Topo50 Map: BJ342

Description

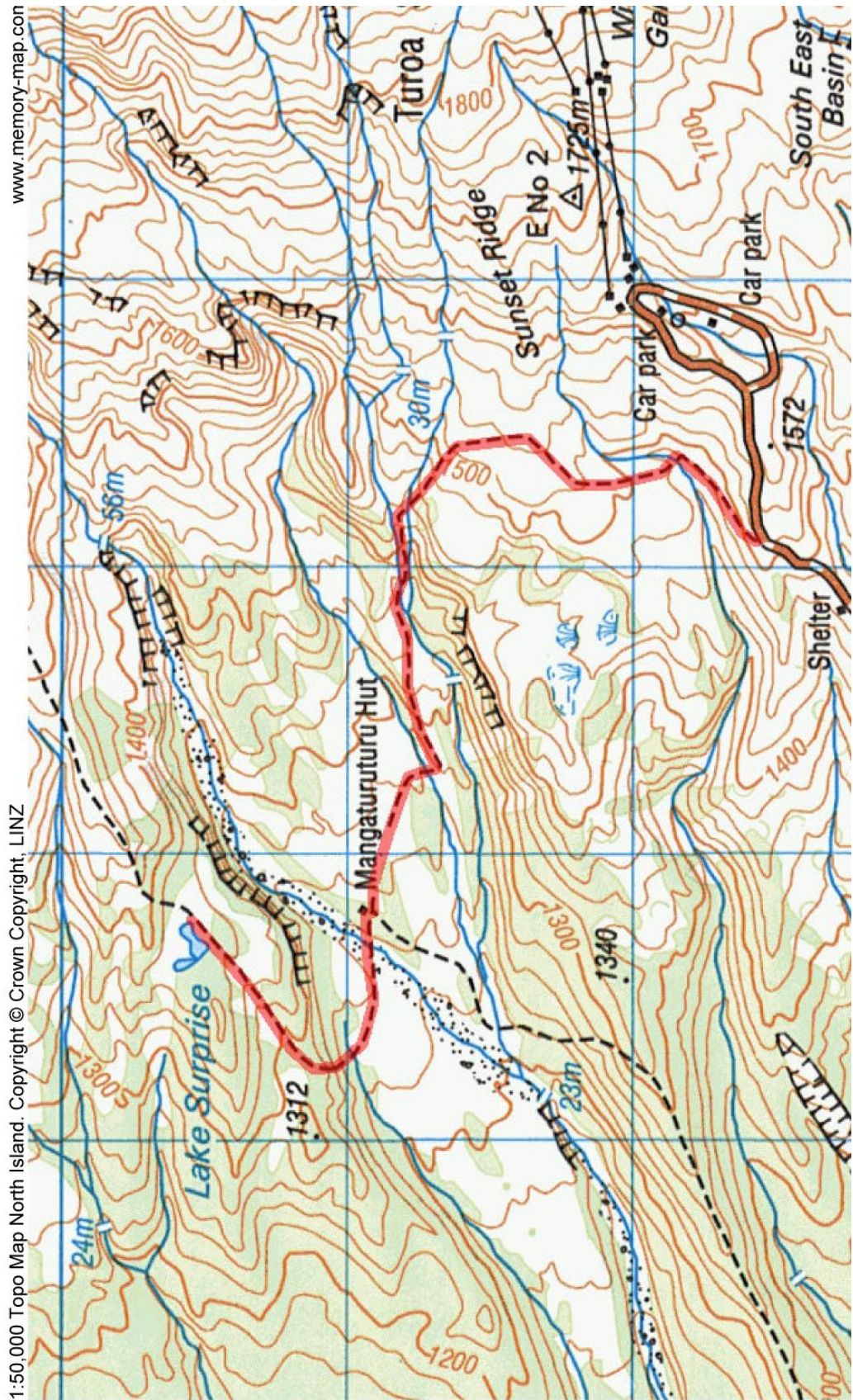
Get a short taster of the Round-The-Mountain Track with a day or overnight trip up to Lake Surprise. From the road-end the track climbs over several outlying mountain flanks before reaching the Mangaturuturu Hut. Beyond the hut, the track begins to side across the valley before reaching a boardwalk leading up to Lake Surprise. The lake itself is a small alpine tarn nestled amongst tussock and beech.

Elevation Profile



© Wilderness Magazine, www.wildernessmag.co.nz

Disclaimer: While every effort has been made to map this route correctly, Wilderness Magazine does not take responsibility for any errors in the route. Users should use discretion when planning their routes and gather as much information as possible before departing.



www.memory-map.com

1:50,000 Topo Map North Island. Copyright © Crown Copyright, LINZ