

Dillon Hut, Stewardship Land, West Coast

WILD FILE

Access The car park is approximately 10km from Jacksons on SH73

Grade Easy

Time 3hr

Length 9.31km

Accommodation Dillon Hut, 10 bunks; Dillons Homestead Hut, 10 bunks

Topo50 Map BR28, BV20

Description

For those wanting an easy overnighter to get back into tramping or who still haven't quite got the strength for a long overnight tramp, the Taipo Valley is for you.

The track immediately rises over the tail end of the Bald Range and then descends to the Taipo River. Hard work done, the track then ambles along the river's edge, through varying sparse forest and displays some lovely scenery with rock falls along the way. There is the odd creek or stream crossing, which means wet feet are unavoidable.

Near to Dillon Hut, the river crossings become a bit more interesting with Seven Mile Creek kicking quite a punch with some high pressure flows to wade through. After heavy rain it would be impassable. Before the hut is Dillon Homestead, a fantastic hut oozing with history. The Dillon couple lived here foraging from the land and prospecting for gold. The homestead was their family home and is now managed by the Kumara Hunting Club. Spread across the walls are items of historic interest with photos and writings about the Dillons.

A few minutes upstream is the modern 10-bunk Dillon Hut.

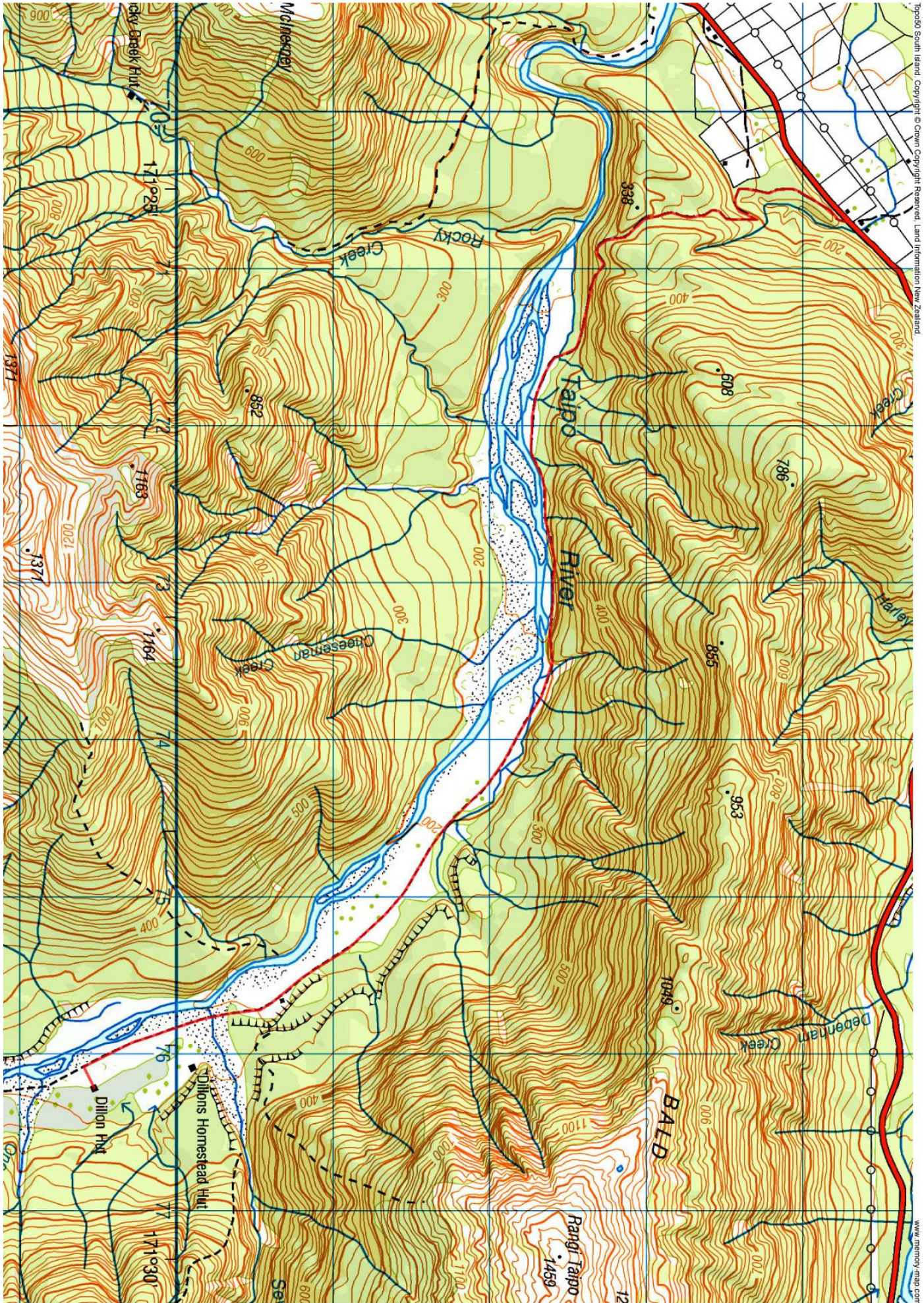
The Taipo Valley is a great place to relax while tramping through some lovely scenery, and with a variety of huts to choose from, there is a place – and space – for everyone.

Elevation Profile



© Wilderness Magazine, www.wildernessmag.co.nz

Disclaimer: While every effort has been made to map this route correctly, Wilderness Magazine does not take responsibility for any errors in the route. Users should use discretion when planning their routes and gather as much information as possible before departing.



Topo50 South Island Copyright © Crown Copyright Reserved. Land Information New Zealand
www.nanny-map.com