

Coopers Knob, Banks Peninsula

Wild file

Access: From Sign of the Kiwi on Dyers Pass head south on Summit Road, past the Sign of the Bellbird about 8km to Gibraltar Rock, where a series of tracks head onto Coopers Knob on the eastern side of the road

Distance: 1.1km

Time: 1hr

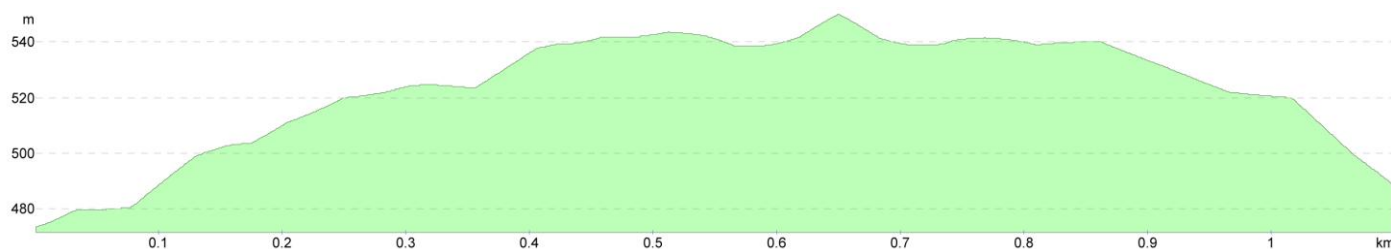
Grade: Easy

Topo50 Map: BX24

Description

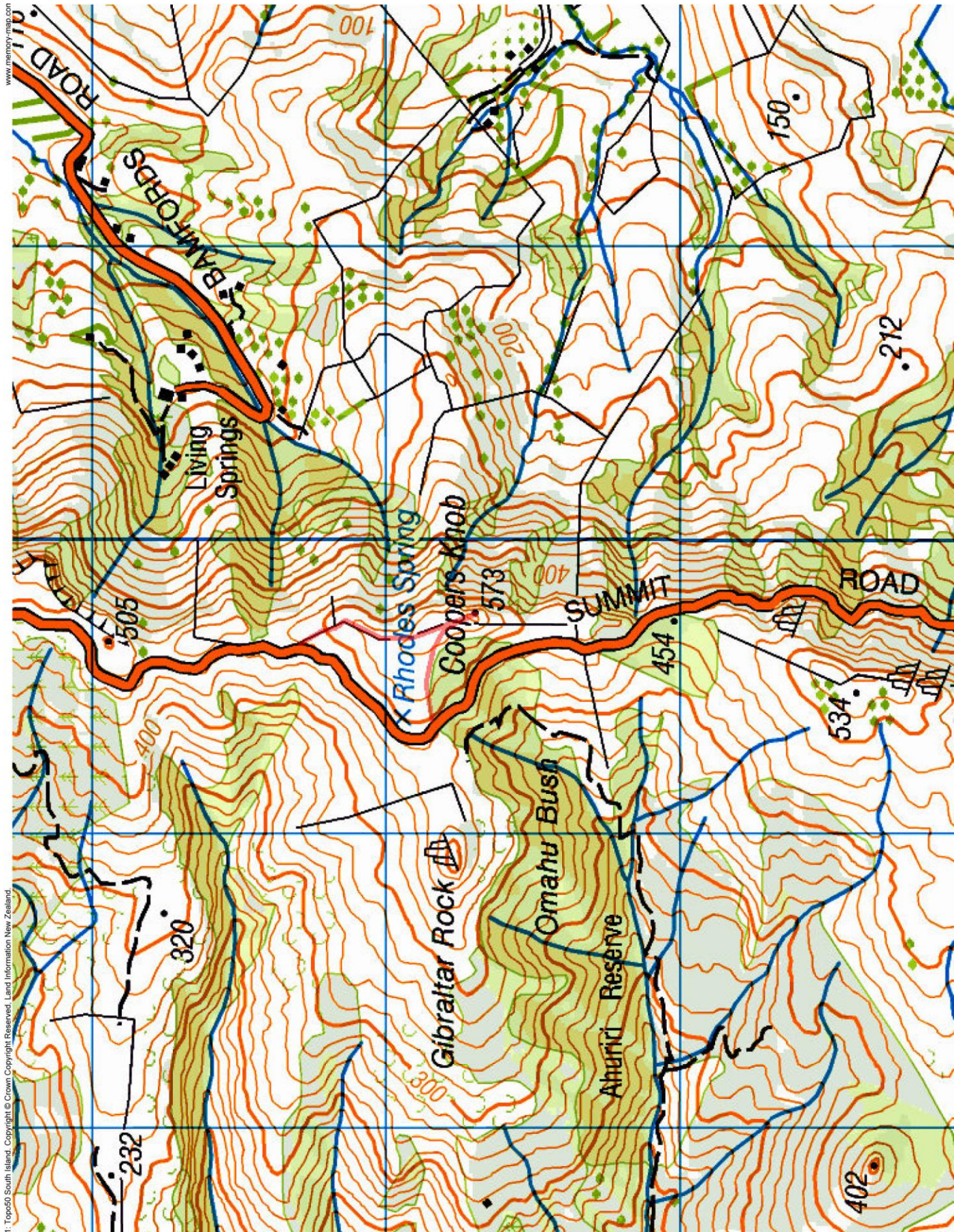
Coopers Knob is the highest of the tors on the crest of what was once a large volcano. It stands above Head of the Bay, overlooking Lyttelton Harbour. The harbour side is sheer whereas the Canterbury Plains side is much gentler and this is where the trail to the summit makes its way. The trail is part of a network of marked walkways along the Port Hills from near Gebbies Pass to Godley Head.

Elevation Profile



© Wilderness Magazine, www.wildernessmag.co.nz

Disclaimer: While every effort has been made to map this route correctly, Wilderness Magazine does not take responsibility for any errors in the route. Users should use discretion when planning their routes and gather as much information as possible before departing.



1: Topo50 South Island. Copyright © Crown Copyright Reserved. Land Information New Zealand.

www.memory-map.com